

„Your success is our mutual aim!“

With know-how, commitment and passion we strive for optimum solutions together with you.

We are looking forward to a constructive partnership with you!



Table of Contents

ATTEC Inside

| | |
|--|-----------|
| Table of contents | 3 |
| At home in the world | 5 |
| Long-lasting partnerships | 7 |
| Mission statement | 9 |
| Quality management | 11 |
| Product portfolio | 13 |
| 01 Welded steel tubes | 14 |
| 02 Seamless hot-rolled tubes | 16 |
| 03 Precision steel tubes | 18 |
| 04 Cylinder tubes | 20 |
| 05 Boiler tubes | 22 |
| 06 Mother tubes | 24 |
| 07 welded stainless steel tubes | 26 |
| Automotive | 28 |
| Energy | 30 |
| Industry | 32 |
| Mechanical Engineering | 34 |
| Construction | 36 |
| Contact | 38 |



ATTEC International

International steel trader

Headquarters in Düsseldorf

Sales offices in Istanbul, Munich and Stuttgart



Welcome

AT HOME IN THE WORLD

Global. Independent. Precise. Reliable.
Flexible. Organized. Full service.

ATTEC International does not only fit the requirement profile of discerning clients, but offers more. We convince with thorough analysis, complex strategic preparation, in-depth immersion in the world of your product and optimum solutions for your demand for steel.

ATTEC International GmbH is a globally operating company rooted in Düsseldorf since it was founded in 2010. In 2011, our subsidiary in Istanbul followed. In 2019, the establishment of our Southern German branch office in Munich followed.

"Your success is our mutual aim!"



**INSPIRED by
our PARTNERS.**

Our way of working

We analyze all relevant parameters.
We convince with economic solutions.
We reliably comply with agreements.
We attach importance to a constructive dialog.



Basis of collaboration

LONG-LASTING PARTNERSHIPS

In times of globalization and constant change, long-lasting partnerships have become an indispensable part of our daily activities.

To us, trust, a sense of responsibility, fairness and mutual appreciation are lived values and the basis of a collaboration that we are proud of.

Our professional experts look back on more than 20 years of industrial experience and are available to provide assistance and advice.

As a customer-oriented company, we always aim at developing and providing optimum solutions for your steel requirements in cooperation with you.

We will gladly develop a customized logistics and processing concept along your value chain for you.

We perceive us as an enterprise that aims to create sustainable value added with its partners. We are looking forward to a constructive partnership with you!





GUIDELINES

Our core values

- Excellence for our partners
- Trust and commitment
- Collaboration and partnership
- Entrepreneurial and independent thinking



Our core values and our

MISSION STATEMENT

A sustainable and responsible corporate governance is closely linked with our values and principles.

Acting in an economically successful manner and at the same time interacting respectfully with people, protecting the environment and making a positive contribution to society – these are the core values of our corporate philosophy.

Our values are the basis of our actions and describe who we are. We understand Corporate Social Responsibility (CSR) as a triad of ecology, economy and social commitment

Our values and principles help us to continuously reflect what we orient ourselves to and on what bases we make our decisions.





Tested and certified





What we value

QUALITY MANAGEMENT

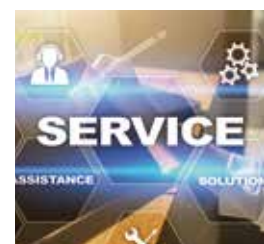
Our partners rightly expect us to deliver high-quality, safe and competitive products.

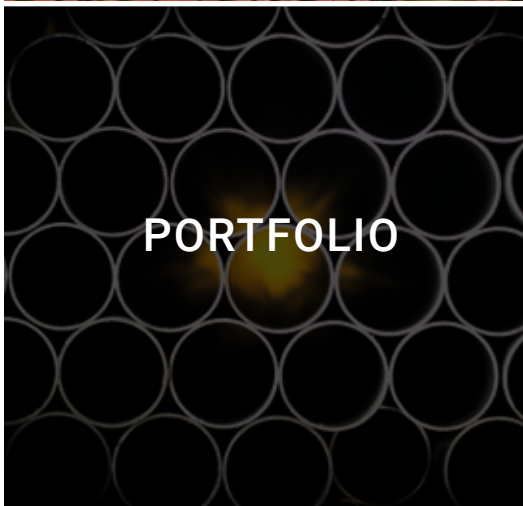
For our partners, we want to be a competent and reliable company at all times, and to exceed the requirements laid down by them.

For this reason, we have been certified according to ISO 9001 and also demand our partners to present respective certifications.

Automotive-specific requirements, such as initial sampling according to VDA or PPAP (incl. IMDS), 8D reports or even feasibility checks are implemented by us according to specification.

Convince yourself of the quality we provide.





Our product portfolio

- 01 Welded steel tubes
- 02 Seamless, hot-rolled tubes
- 03 Precision steel tubes
- 04 Cylinder tubes
- 05 Boiler tubes
- 06 Mother tubes
- 07 Welded stainless steel tubes



Products and applications

OUR PRODUCT PORTFOLIO

Our product portfolio includes the distribution of

- Welded steel tubes
- Seamless, hot-rolled tubes
- Precision steel tubes
- Cylinder tubes
- Boiler tubes
- Mother tubes
- Welded stainless steel tubes

Our product range is applied in the areas

- Automotive
- Energy
- Industry
- Mechanical engineering
- Construction

More detailed information regarding our products and services can be obtained on our internet site at:

www.attec-international.com





Our product portfolio

| Standard | Welded steel tubes | OD in mm | WT in mm |
|-------------|---|--------------|---|
| EN 10217-1 | Tubes for pressure purposes – room temperature | 21.3 – 323.9 | 2.0 – 12.7 |
| EN 10217-2 | Tubes for pressure purposes – increased temp. | 21.3 – 323.9 | 2.0 – 12.7 |
| EN 10217-3 | Tubes for pressure purp. – alloyed fine grain steel | 21.3 – 323.9 | 2.0 – 12.7 |
| EN 10219-2 | Hollow sections for steel construction | 21.3 – 323.9 | 2.0 – 12.7 |
| EN 10255 | Non-alloy steel tubes | 21.3 – 165.1 | 2.0 – 4.5 (L) 2.6 – 5.0 (M) 3.2 – 5.4 (H) |
| EN 10296-1 | Steel tubes for mechanical engineering | 21.3 – 323.9 | 2.0 – 12.7 |
| EN ISO 3183 | Steel tubes for pipeline systems (PSL1, PSL2) | 21.3 – 323.9 | 2.0 – 12.7 |



Product information

01 | WELDED STEEL TUBES

Welded steel tubes according to standard EN 10217-1 and EN 10217-3 show extraordinary pressure resistance at room temperature.

Steel tubes of the EN 10217-2 standard additionally show an improved temperature resistance.

Welded tubes for steel construction can be delivered according to the standards EN 10210-2 / EN 10219-2, whereby it should be noted that hollow sections according to EN 10210-2 allow for higher static stress levels.

Welded steel tubes according to the standards EN 10255 L / M / H are used for supplying and draining sanitary lines.

These are suitable for welding and thread cutting.

Welded tubes of the EN 10296-1 standard are especially designed for the requirements of the processing industry and are excellently suited for weldability and processability.

Steel tubes for pipeline transportation systems of the EN ISO 3183 standard are used for routing oil and gas media.



More information



Our product portfolio

| Standard | Seamless, hot-rolled steel tubes | OD in mm | WT in mm |
|------------|--|--------------|---|
| EN 10216-1 | Tubes for pressure purposes – room temperature | 17.2 – 660.0 | 2.0 – 75.0 |
| EN 10216-2 | Tubes for pressure purposes – increased temp. | 17.2 – 660.0 | 2.0 – 75.0 |
| EN 10216-3 | Tubes for pressure purposes – alloyed fine grain steel | 17.2 – 660.0 | 2.0 – 75.0 |
| EN 10219-2 | Hollow sections for steel construction | 21.3 – 323.9 | 2.0 – 12.7 |
| EN 10255 | Non-alloy steel tubes | 21.3 – 165.1 | 2.0 – 4.5 (L) 2.6 – 5.0 (M) 3.2 – 5.4 (H) |
| EN 10297-1 | Steel tubes for mechanical engineering | 17.2 – 660.0 | 2.0 – 75.0 |



Product information

02 | SEAMLESS HOT-ROLLED STEEL TUBES

Seamless, hot-rolled steel tubes according to EN 10216-1 and EN 10216-3 show an extraordinary pressure resistance at room temperature. In addition to this, steel tubes according to EN 10216-2 also show an increased temperature resistance.

We can deliver seamless, hot-rolled tubes for steel construction according to the standards EN 10210-2 / EN 10219-2, whereby hollow sections according to EN 10210-2 allow for higher static stress levels.

Seamless, hot-rolled steel tubes according to the standards EN 10255 L / M / H are used for supplying and draining sanitary lines. These are suitable for welding and thread cutting.

Seamless, hot-rolled steel tubes according to the EN 102971 standard are especially designed for the requirements of the processing industry and are excellently suited for weldability and processability.



More information



Our product portfolio

| Standard | Precision steel tubes | OD in mm | WT in mm |
|------------|---------------------------------------|---------------------------|------------|
| EN 10305-1 | Seamless, cold-drawn | 4 – 245 | 0.5 – 25.0 |
| EN 10305-2 | Welded, cold-drawn | 4 – 245 | 0.4 – 15.0 |
| EN 10305-3 | Welded, size-rolled | 15 – 93 | 1.0 – 3.0 |
| EN 10305-4 | Seamless, cold-drawn HPL | 6 – 80 | 1.0 – 12.5 |
| EN 10305-5 | Welded, size-formed rectangular tubes | 10 x 10 – 100 x 100 | 2.0 – 5.0 |



Product information

03 | PRECISION STEEL TUBES

Our precision steel tubes are characterized by excellent dimensional tolerance in terms of outer and inner diameter or wall thickness, respectively. Only high-quality primary material is used in order to enable us to deliver continuously high quality.

Due to the production process, these tubes provide best tube surfaces and accurately defined properties. Small batches and intermediate sizes can also be economically produced for our clients.

Due to an additional work step, the so-called cold drawing, the dimensional properties and surfaces of our precision steel tubes can be further improved.

Some steel grades cannot be welded; in such cases the use of seamless precision steel tubes may be indispensable.



More information



Our product portfolio

| Standard | Cylinder tubes | OD in mm | WT in mm |
|------------|---|----------|------------|
| EN 10305-1 | Seamless, cold-drawn HP tubes ready to use | 50 – 125 | 5.0 – 7.5 |
| EN 10305-1 | Seamless, cold-drawn HPK tubes for pistons/telescopic cylinders | 20 – 140 | 2.0 – 30.0 |
| EN 10305-1 | Seamless, cold-drawn HPS tubes Tol. H8, Ra inside < 0.3 µm | 50 – 180 | 5.0 – 22.5 |
| EN 10305-2 | Welded, cold-drawn HPZ tubes suitable for honing/rolling | 35 – 130 | 3.0 – 7.5 |
| EN 10305-2 | Welded, cold-drawn HPS tubes Tol. H9, Ra inside < 0.8 µm | 35 – 115 | 5.0 – 7.5 |



Product information

04 | CYLINDER TUBES

Cylinder tubes are characterized by excellent dimensional tolerance in terms of inner and outer diameter or wall thickness, respectively.

The surface shows a very low inside roughness; in case of HPS tubes according to EN 10305-2 with an H9 tolerance and Ra inside $< 0.8 \mu\text{m}$ and in HPS tubes according to EN 10305-1 Ra inside $< 0.3 \mu\text{m}$. Due to their surface properties, our HPS tubes can therefore be directly used for manufacturing.

HPK tubes for the production of piston rods or telescopic cylinders according to EN 10305-1 can therefore be provided with an Ra inside $< 0.4 \mu\text{m}$.

Our cylinder tubes clearly exceed the mechanical requirements and, upon request, can undergo additional ultrasonic testing for an additional charge.

We offer HP tubes and HPZ tubes in treatment condition +SR in order to enable best possible processing.



More information



Our product portfolio

| Standard | Boiler tubes | OD in mm | WT in mm |
|------------|--|--------------|------------|
| EN 10216-2 | Tubes for pressure purposes – increased temperatures seamless, hot-rolled | 17.2 – 660.0 | 2.0 – 75.0 |
| EN 10216-3 | Tubes for pressure purposes – alloyed fine grain steel seamless, hot-rolled | 17.2 – 660.0 | 2.0 – 75.0 |
| EN 10217-2 | Tubes for pressure purposes – increased temperatures welded, hot-formed | 21.3 – 323.9 | 2.0 – 12.7 |
| EN 10217-3 | Tubes for pressure purposes – alloyed fine grain steel welded, hot-formed | 21.3 – 323.9 | 2.0 – 12.7 |



Product information

05 | BOILER TUBES

Welded boiler tubes according to EN 10217-3 and seamless boiler tubes according to EN 10216-3 are characterized by an extraordinary pressure resistance at room temperature.

Moreover, welded boiler tubes according to the EN 10217-2 standard and seamless boiler tubes according to EN 10216-2 show an enhanced temperature resistance.

Our boiler tubes are available in black, galvanized, varnished or PE-coated. In addition, delivery with threads and sleeves is also possible

Some grades cannot be welded; in such cases, the use of seamless boiler tubes is indispensable.



More information



Our product portfolio

| Standard | Mother tubes | OD in mm | WT in mm |
|----------|---|--------------|------------|
| EN 10210 | Mother tubes Suitable for the production of precision tubes, also available in pre-annealed condition | 21.3 – 139.7 | 2.3 – 16.0 |



Product information

06 | MOTHER TUBES

Mother tubes according to EN 10210 are used for the production of precision steel tubes.

A constantly high quality of the strip material is imperative in order to produce high-quality mother tubes for further processing.

The plants we represent use mother tubes with self-manufactured pipe ingots for their precision steel tube production.

Sophisticated customers such as, for instance, the automotive or hydraulic industries thus receive products of a consistently high quality.



More information



© Fischer Edelstahlrohre GmbH

Our product portfolio

| Standard | Welded stainless steel tubes | OD in mm | WT in mm |
|------------|---|----------|-----------|
| EN 10217-7 | For pressure purposes | 5 – 205 | 0,1 – 4,0 |
| EN 10296-2 | For general purposes | 5 – 205 | 0,1 – 4,0 |
| DIN 28181 | For heat-exchanger | 5 – 205 | 0,1 – 4,0 |
| ASTM A249 | Austenitic grade tubes for boiler, superheater, heat-exchanger, and condenser | 5 – 50 | 0,3 – 4,0 |
| ASTM A268 | Ferritic and martensitic for general service | 5 – 50 | 0,3 – 4,0 |
| ASTM A312 | Austenitic grade | 5 – 50 | 0,3 – 4,0 |
| ASTM A688 | Austenitic for feedwater heater tubes | 5 – 50 | 0,3 – 4,0 |
| ASTM A803 | Ferritic for feedwater heater tubes | 5 – 50 | 0,3 – 4,0 |



Product information

07 | WELDED STAINLESS STEEL TUBES

Our welded stainless-steel tubes are characterized by high production standards, which exceeds the standard requirements. They are first choice for applications that require high-strength, temperature- and corrosion-resistant tubes.

Corrosion-resistant tubes are used in many branches as automotive, mechanical and plant engineering, sanitary, energy, industry.

Particular examples are chemical and petro-chemical applications, aerospace, power plant construction, oil and gas production.

Hydroforming, extreme forming and complex geometries are also possible.

For energy and industry sectors we frequently supply tubes with high pressure requirements. Further processing steps can be carried out in the tube mill.. We are glad to support you with your project.

Our welded stainless-steel tubes are also H2 Ready! They are certified by TÜV SÜD certified for hydrogen applications up to 900 bar in the material grades 1.4401, 1.4404, 1.4571 and 1.4435.



More information



We deliver

the following semi-finished products for further processing:

- | | |
|--------------------------------|-----------------------------|
| → Shock absorber tubes | → Tubes for seat structures |
| → Cardan shaft tubes | → Axle tubes |
| → Steering and track rod tubes | → Camshaft tubes |
| → Tubes for bushes | → Stabilizer tubes |
| → Shaft tubes | → Support tubes |
| → Tubes for frame structures | → Gas spring tubes |



Application areas

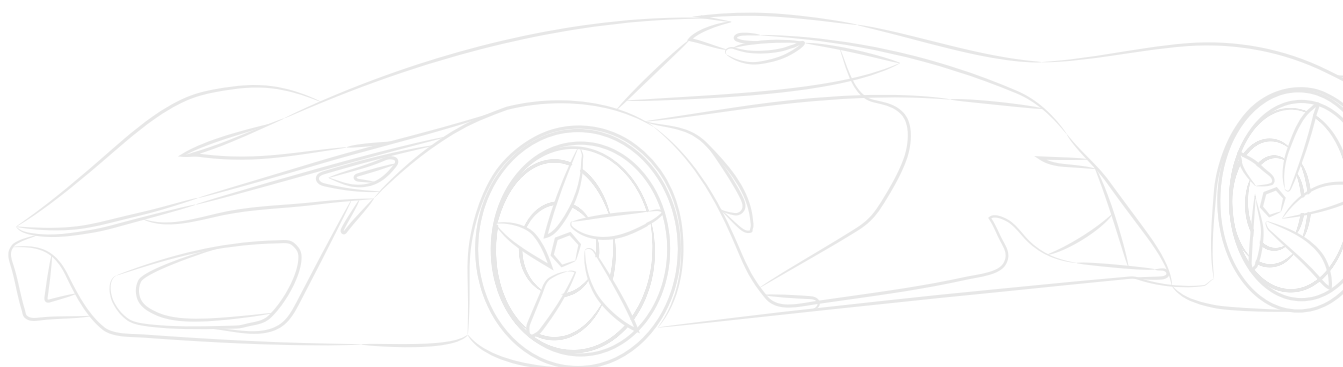
AUTOMOTIVE

Our product range represents an important base for the production of high-quality, precise and safe parts for the automotive industry and its suppliers.

For each application, the requests undergo a feasibility check to enable us to offer an economically efficient solution.

Both our partner plants and we dispose of the long-term competence that is required to guarantee professional advice.

The need for just-in-time cycles, even of semi-finished parts, can be jointly discussed and taken into consideration.





We deliver

the following semi-finished products for further processing:

- Boiler tubes
- Tubes for pressure applications
- Pipelines (oil, water, gas)
- Tubes for maritime applications
- Pipes for the geothermal sector
- OCTG tubes
- District heating pipes
- Heat exchanger tubes



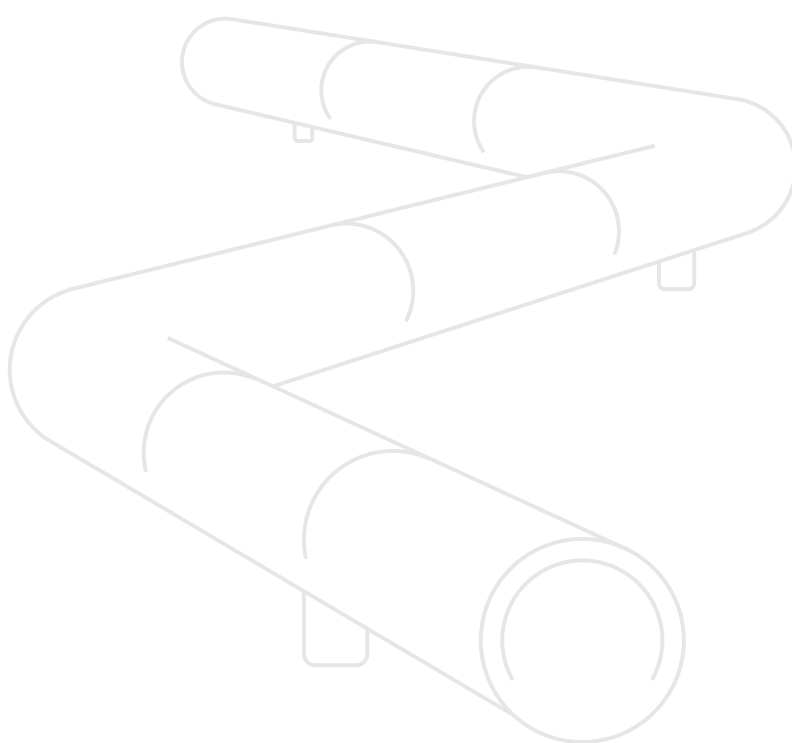
Application areas

ENERGY

Tubes for application in the energy area are a significant part of our infrastructure.

Due to the high safety requirements, they require high resistance to pressure or temperatures.

If needed, acceptance by an external expert can be performed for a fee.





We deliver

the following semi-finished products for further processing:

- Sprinkler tubes
- Injection tubes
- Anchor technology
- Lance tubes
- Tensioning system
- Fitting tubes
- Piling tubes



Application areas

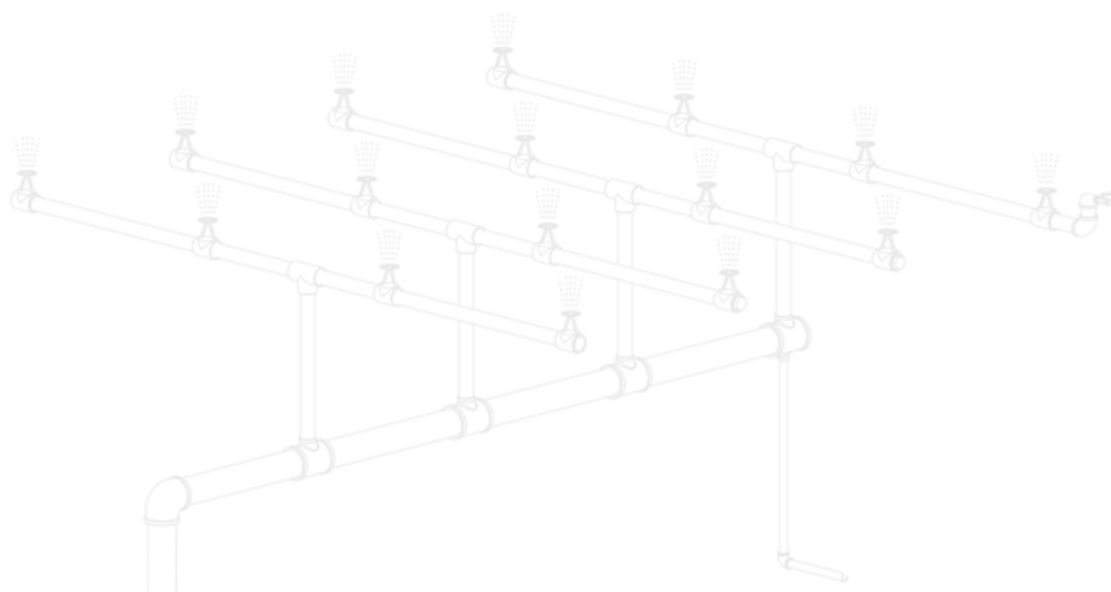
INDUSTRY

The industrial sector represents the foundation for our urban and industrial development.

Due to the constantly rising requirements, advanced technical understanding as well as consulting competence are in demand in this area.

We will be glad to discuss the requirements of your product with you.

Therefore, we can guarantee to deliver a safe, robust and high-quality product.





We deliver

the following semi-finished products for further processing:

- Agricultural machinery
- Construction machinery
- Production machinery
- HP tubes
- HP tubes (micro-finished)
- HPK tubes (for pistons/cylinders)
- HPS cylinder tubes (H8 / H9)
- HPZ tubes (for honing/rolling)



Application areas

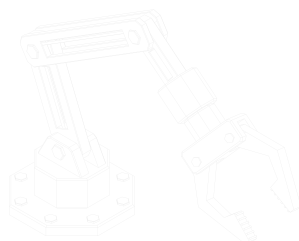
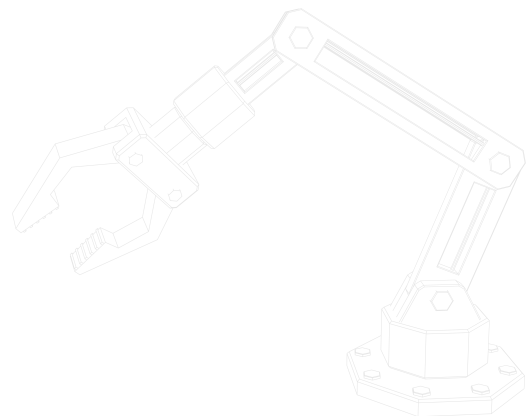
MECHANICAL ENGINEERING

In order to remain internationally leading, the mechanical engineering sector needs a partner who can match its quality demands and master its logistical challenges.

Due to our long-term experience with customers from this industry, we always clarify with our customers what the exact use and the qualitative requirements towards our products will be.

Subsequently, we discuss a technically suitable and economically reasonable solution for your particular problem.

We will support you with our expert advice during the final implementation.





We deliver

the following semi-finished products for further processing:

- Façade engineering
- Railing construction
- Roof construction
- Substructures

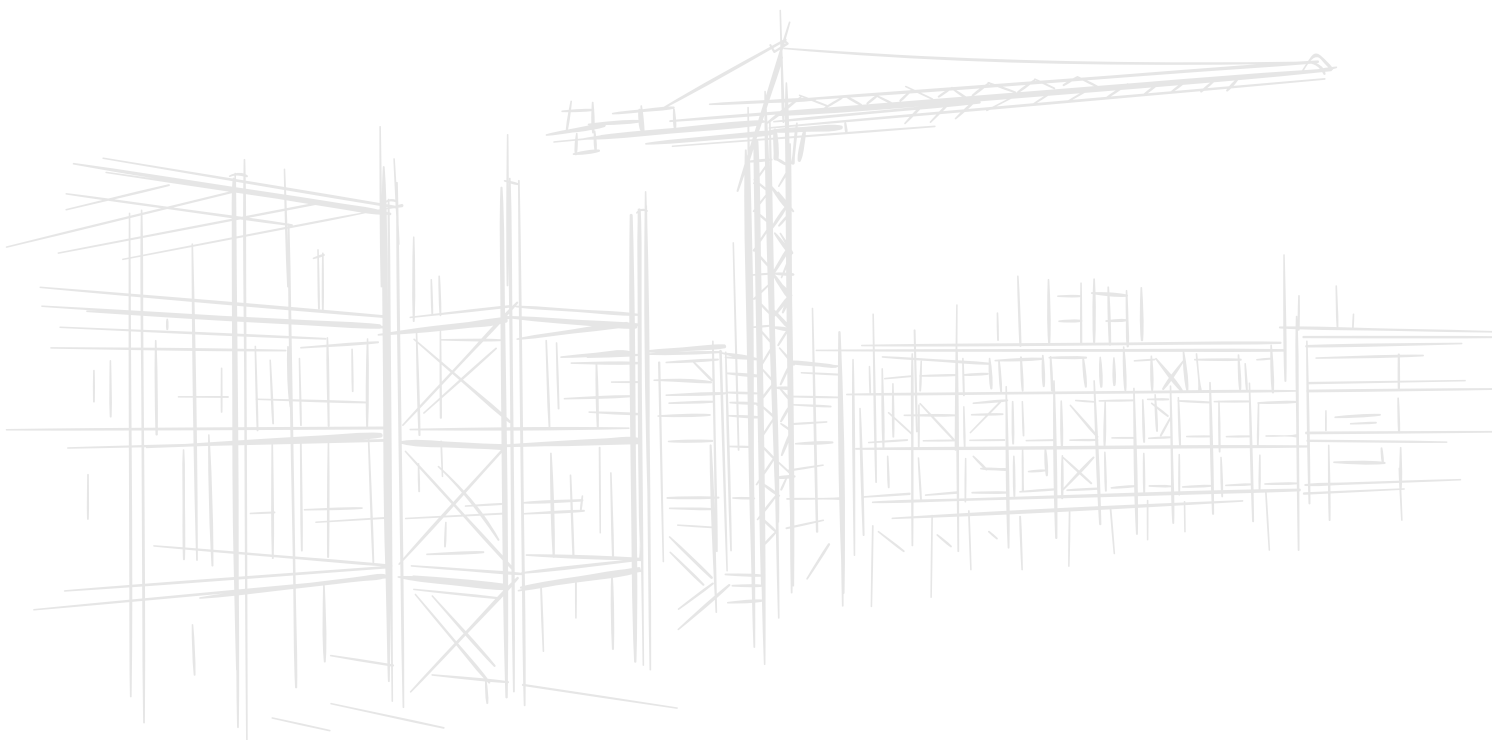


Application areas

CONSTRUCTION

For its areas of application, steel construction requires products with a high torsional stability and an associated structural load capacity.

We will gladly support you with our competence and experience in finding a customized solution for your requirement.





Wir freuen uns auf unsere Zusammenarbeit!

We believe in bundling resources and knowledge as well as in long-lasting relationships based on honesty. Partnership means collaborating, listening and seizing opportunities. It creates values for all those participating – from the supplier to staff up to the customer.

We take pride in making our know-how available to you and look forward to meeting your challenging tasks!



Contact

OFFICES

Düsseldorf Headquarters

ATTEC International GmbH
Peter-Müller-Straße 16
40468 Düsseldorf
Germany

☎ +49 211 176099-60
☎ +49 211 176099-70
@ info@atttec-international.de
🌐 www.atttec-international.com

Munich Office

ATTEC International GmbH
Bahnhofstraße 17
82327 Tutzing
Germany

☎ +49 8158 91690-40
☎ +49 8158 91690-50
@ info@atttec-international.de
🌐 www.atttec-international.com

Stuttgart Office

ATTEC International GmbH
Esslinger Str. 7
70771 Leinfelden-Echterdingen
Germany

☎ +49 711 995964-10
☎ +49 711 995964-19
@ info@atttec-international.de
🌐 www.atttec-international.com

Istanbul Office

ATTEC Uluslararası Dış Ticaret A.Ş.
Barbaros Mahallesi Mor Sümbül Sokak
Varyap Meridian I Blok No: 1 D:238
Ataşehir 34746 İstanbul/Türkiye

☎ +90 216 488 88 90
☎ +90 216 488 98 38
@ info@atttec-international.com.tr
🌐 www.atttec-international.com

